



## TOEBEHOREN



- Breed pakket
- Uit voorraad leverbaar
- Europees fabrikaat

## Draadfittingen messing vernikkeld

medium	perslucht, neutrale gasen en vloeistoffen
werkdrukken	150 bar (zie tabel)
temperaturen	-30°C / +150°C
materiaal	messing, vernikkeld

draadmaat	max werkdruk*
1/8"	150 bar
1/4"	100 bar
3/8"	75 bar
1/2"	50 bar
3/4"	85 bar
1"	80 bar

\* houdt u bij artikelen met meerdere draden altijd de laagste werkdruk aan.

Een zeer breed pakket draadfittingen zal u helpen de aansluitingen en verlopen te maken, die u nodig heeft om uw machines af te bouwen of te onderhouden.

Of het nu voor perslucht is, water, olie of andere vloeistoffen, u kunt de draadfittingen tot hoge drukken inzetten. Voor voedingsmiddelen of chemicaliën kunt u gebruik maken van RVS fittingen, of vraag eventueel de speciale NSF kwaliteit aan voor een kostenbesparing.

### Borstnippel met BSPP draad, Metrisch



bestelcode	T <sup>1</sup>	T <sup>2</sup>
DRF.MMM5M5	M5	M5
DRF.MMM501	M5	G1/8"
DRF.MM0101	G1/8"	G1/8"
DRF.MM0102	G1/8"	G1/4"

code	T <sup>1</sup>	T <sup>2</sup>
DRF.MM0103	G1/8"	G3/8"
DRF.MM0202	G1/4"	G1/4"
DRF.MM0203	G1/4"	G3/8"
DRF.MM0204	G1/4"	G1/2"

code	T <sup>1</sup>	T <sup>2</sup>
DRF.MM0303	G3/8"	G3/8"
DRF.MM0304	G3/8"	G1/2"
DRF.MM0404	G1/2"	G1/2"
DRF.MM0405	G1/2"	G3/4"

### Borstnippel met BSPT draad



bestelcode	T <sup>1</sup>	T <sup>2</sup>
DRF.MM0101/C	R1/8"	R1/8"
DRF.MM0102/C	R1/8"	R1/4"
DRF.MM0103/C	R1/8"	R3/8"
DRF.MM0104/C	R1/8"	R1/2"
DRF.MM0202/C	R1/4"	R1/4"

code	T <sup>1</sup>	T <sup>2</sup>
DRF.MM0203/C	R1/4"	R3/8"
DRF.MM0204/C	R1/4"	R1/2"
DRF.MM0303/C	R3/8"	R3/8"
DRF.MM0304/C	R3/8"	R1/2"
DRF.MM0404/C	R1/2"	R1/2"

code	T <sup>1</sup>	T <sup>2</sup>
DRF.MM0405/C	R1/2"	R3/4"
DRF.MM0505/C	R3/4"	R3/4"
DRF.MM0506/C	R3/4"	R1"
DRF.MM0606/C	R1"	R1"

### 3 delige fitting met BSPT draad

Deze uitvoering is NIET messing vernikkeld



bestelcode	T <sup>1</sup>
DRF.3DMM0101	R1/8"
DRF.3DMM0202	R1/4"
DRF.3DMM0303	R3/8"
DRF.3DMM0404	R1/2"
DRF.3DMM0505	R3/4"
DRF.3DMM0606	R1"

### 3 delige fitting met BSPT draad



bestelcode	T <sup>1</sup>	T <sup>2</sup>
DRF.3DMF01	R1/8"	R1/8"
DRF.3DMF02	R1/4"	R1/4"
DRF.3DMF03	R3/8"	R3/8"
DRF.3DMF04	R1/2"	R1/2"



### Verlengpijpje met BSPP binnen- en buitendraad



bestelcode	T	L
DRF.MF0101/16	G1/8"	16
DRF.MF0101/36	G1/8"	36
DRF.MF0202/27	G1/4"	27

bestelcode	T	L
DRF.MF0202/43	G1/4"	43
DRF.MF0303/32	G3/8"	32

### Draadnippel BSPT binnen- en buitendraad



bestelcode	T <sup>1</sup>	T <sup>2</sup>
DRF.MF0101/C	R1/8"	R1/8"
DRF.MF0102/C	R1/8"	R1/4"
DRF.MF0103/C	R1/8"	R3/8"
DRF.MF0202/C	R1/4"	R1/4"
DRF.MF0203/C	R1/4"	R3/8"
DRF.MF0204/C	R1/4"	R1/2"
DRF.MF0303/C	R3/8"	R3/8"
DRF.MF0304/C	R3/8"	R1/2"
DRF.MF0404/C	R1/2"	R1/2"
DRF.MF0405/C	R1/2"	R3/4"

### Draadnippel BSPP binnen- en buitendraad



bestelcode	T <sup>1</sup>	T <sup>2</sup>
DRF.MFM501	M5	G1/8"
DRF.MF0101	G1/8"	G1/8"
DRF.MF0102	G1/8"	G1/4"
DRF.MF0103	G1/8"	G3/8"
DRF.MF0202	G1/4"	G1/4"

bestelcode	T <sup>1</sup>	T <sup>2</sup>
DRF.MF0203	G1/4"	G3/8"
DRF.MF0204	G1/4"	G1/2"
DRF.MF0303	G3/8"	G3/8"
DRF.MF0304	G3/8"	G1/2"
DRF.MF0404	G1/2"	G1/2"

## Draadfittingen messing vernikkeld

### Korte draadnippel BSPP binnen- en buitendraad



bestelcode	T <sup>1</sup>	T <sup>2</sup>
DRF.MF01M5/KORT	G1/8"	M5
DRF.MF0201/KORT	G1/4"	G1/8"
DRF.MF0301/KORT	G3/8"	G1/8"
DRF.MF0302/KORT	G3/8"	G1/4"
DRF.MF0401/KORT	G1/2"	G1/8"
DRF.MF0402/KORT	G1/2"	G1/4"
DRF.MF0403/KORT	G1/2"	G3/8"
DRF.MF0503/KORT	G3/4"	G3/8"
DRF.MF0504/KORT	G3/4"	G1/2"
DRF.MF0605/KORT	G1"	G3/4"

### Korte draadnippel BSPP bi x bu met O-ring



bestelcode	T1	T <sup>2</sup>
DRF.MFG01M5	G1/8"	M5
DRF.MFG02G01	G1/4"	G1/8"
DRF.MFG03G01	G3/8"	G1/8"
DRF.MFG03G02	G3/8"	G1/4"
DRF.MFG04G02	G1/2"	G1/4"
DRF.MFG04G03	G1/2"	G3/8"
DRF.MFG05G04	G3/4"	G1/2"

### Korte draadnippel BSPT binnen- en buitendraad

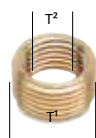


bestelcode	T <sup>1</sup>	T <sup>2</sup>
DRF.MF0201C/KORT	R1/4"	R1/8"
DRF.MF0301C/KORT	R3/8"	R1/8"
DRF.MF0302C/KORT	R3/8"	R1/4"
DRF.MF0401C/KORT	R1/2"	R1/8"
DRF.MF0402C/KORT	R1/2"	R1/4"

bestelcode	T <sup>1</sup>	T <sup>2</sup>
DRF.MF0403C/KORT	R1/2"	R3/8"
DRF.MF0503C/KORT	R3/4"	R3/8"
DRF.MF0504C/KORT	R3/4"	R1/2"
DRF.MF0604C/KORT	R1"	R1/2"
DRF.MF0605C/KORT	R1"	R3/4"

bestelcode	T <sup>1</sup>	T <sup>2</sup>
DRF.MF0704C/KORT	R1.1/4"	R1/2"
DRF.MF0705C/KORT	R1.1/4"	R3/4"
DRF.MF0706C/KORT	R1.1/4"	R1"
DRF.MF0806C/KORT	R1.1/2"	R1"
DRF.MF0906C/KORT	R2"	R1"

### Verloopring BSPP binnen- en buitendraad



bestelcode	T <sup>1</sup>	T <sup>2</sup>
DRF.MF0201/RING	G1/4"	G1/8"
DRF.MF0302/RING	G3/8"	G1/4"
DRF.MF0403/RING	G1/2"	G3/8"
DRF.MF0504/RING	G3/4"	G1/2"
DRF.MF0605/RING	G1"	G3/4"

### Swivel BSPP binnen- en buitendraad



bestelcode	T <sup>1</sup>	T <sup>2</sup>
DRF.MF01/SW	G1/8"	G1/8"
DRF.MF02/SW	G1/4"	G1/4"
DRF.MF03/SW	G3/8"	G3/8"

### Bloknippel BSPP binnen- en buitendraad



bestelcode	T <sup>1</sup>	T <sup>2</sup>
DRF.BL01/L	G1/8"	G1/8"
DRF.BL02/L	G1/4"	G1/4"

### Schotdoorvoer BSPP binnen- en buitendraad



bestelcode	T <sup>1</sup>	T <sup>2</sup>	schotdikte max
DRF.SCHOTM5	M5	M10X1	7 mm
DRF.SCHOT01	G1/8"	M16X1.5	10 mm
DRF.SCHOT02	G1/4"	M20X1.5	16 mm
DRF.SCHOT03	G3/8"	M26X1.5	15 mm
DRF.SCHOT04	G1/2"	M28X1.5	21 mm

### Draadsok BSPP binnendraad



bestelcode	T <sup>1</sup>	T <sup>2</sup>
DRF.FFM5M5	M5	M5
DRF.FFM501	M5	R1/8"
DRF.FF0101	G1/8"	G1/8"
DRF.FF0102	G1/8"	G1/4"
DRF.FF0103	G1/8"	G1/2"
DRF.FF0104	G1/8"	G3/4"

bestelcode	T <sup>1</sup>	T <sup>2</sup>
DRF.FF0202	G1/4"	G1/4"
DRF.FF0203	G1/4"	G3/8"
DRF.FF0204	G1/4"	G1/2"
DRF.FF0303	G3/8"	G3/8"
DRF.FF0304	G3/8"	G1/2"
DRF.FF0404	G1/2"	G1/2"

bestelcode	T <sup>1</sup>	T <sup>2</sup>
DRF.FF0405	G1/2"	G3/4"
DRF.FF0406	G1/2"	G1"
DRF.FF0505	G3/4"	G3/4"
DRF.FF0506	G3/4"	G1"
DRF.FF0606	G1"	G1"

### L- fitting BSPT buitendraad



bestelcode	T
DRF.MM01/L	R1/8"
DRF.MM02/L	R1/4"
DRF.MM03/L	R3/8"
DRF.MM04/L	R1/2"
DRF.MM05/L	R3/4"
DRF.MM06/L	R1"

### L- fitting BSPT binnendraad



bestelcode	T
DRF.FF01/L	R1/8"
DRF.FF02/L	R1/4"
DRF.FF03/L	R3/8"
DRF.FF04/L	R1/2"
DRF.FF05/L	R3/4"
DRF.FF06/L	R1"

### L- fitting BSPT binnen- en buitendraad



bestelcode	T
DRF.MF01/L	R1/8"
DRF.MF02/L	R1/4"
DRF.MF03/L	R3/8"
DRF.MF04/L	R1/2"
DRF.MF05/L	R3/4"
DRF.MF06/L	R1"

### T- fitting BSPT binnendraad



bestelcode	T
DRF.3F01	R1/8"
DRF.3F02	R1/4"
DRF.3F03	R3/8"
DRF.3F04	R1/2"
DRF.3F05	R3/4"
DRF.3F06	R1"

### T- fitting BSPT buitendraad



bestelcode	T
DRF.3M01	R1/8"
DRF.3M02	R1/4"
DRF.3M03	R3/8"
DRF.3M04	R1/2"
DRF.3M05	R3/4"
DRF.3M06	R1"

### T- fitting BSPT binnen- en buitendraad



bestelcode	T
DRF.MFM01	R1/8"
DRF.MFM02	R1/4"
DRF.MFM03	R3/8"
DRF.MFM04	R1/2"
DRF.MFM05	R3/4"
DRF.MFM06	R1"

### T- fitting BSPT binnen- en buitendraad



bestelcode	T
DRF.FMM01	R1/8"
DRF.FMM02	R1/4"
DRF.FMM03	R3/8"
DRF.FMM04	R1/2"
DRF.FMM05	R3/4"
DRF.FMM06	R1"

### T- fitting BSPT binnen- en buitendraad



bestelcode	T
DRF.FFM01	R1/8"
DRF.FFM02	R1/4"
DRF.FFM03	R3/8"
DRF.FFM04	R1/2"
DRF.FFM05	R3/4"
DRF.FFM06	R1"

### T- fitting BSPT binnen- en buitendraad



bestelcode	T
DRF.FMF01	R1/8"
DRF.FMF02	R1/4"
DRF.FMF03	R3/8"
DRF.FMF04	R1/2"
DRF.FMF05	R3/4"
DRF.FMF06	R1"

### Y- fitting BSPP binnendraad



bestelcode	T
DRF.3F01/Y	R1/8"
DRF.3F02/Y	R1/4"
DRF.3F03/Y	R3/8"
DRF.3F04/Y	R1/2"

### T- fitting BSPT binnen- en buitendraad



bestelcode	T
DRF.FMF01/Y	R1/8"
DRF.FMF02/Y	R1/4"
DRF.FMF03/Y	R3/8"
DRF.FMF04/Y	R1/2"

### Muurplaat binnendraad BSP



bestelcode	T
AVR.AFF12	R1/2"

### X- fitting BSPP buitendraad



T (4X)

bestelcode	T
DRF.4M01	R1/8"
DRF.4M02	R1/4"
DRF.4M03	R3/8"
DRF.4M04	R1/2"

### X- fitting BSPP binnendraad



T (4X)

bestelcode	T
DRF.4F01	R1/8"
DRF.4F02	R1/4"
DRF.4F03	R3/8"
DRF.4F04	R1/2"

### X- fitting BSPP binnen- en buitendraad



T (4X)

bestelcode	T
DRF.M3F01	R1/8"
DRF.M3F02	R1/4"
DRF.M3F03	R3/8"
DRF.M3F04	R1/2"

### Stop BSPP met NBR O-ring



T

bestelcode	T
DRF.STOPM5	M5
DRF.STOPM10	M10x1.0
DRF.STOPM12	M12x1.25
DRF.STOPM16	M16x1.5
DRF.STOP01	G1/8"
DRF.STOP02	G1/4"
DRF.STOP03	G3/8"
DRF.STOP04	G1/2"
DRF.STOP05	G3/4"
DRF.STOP06	G1"

### Stop BSPP met Viton O-ring



T

bestelcode	T
DRF.STOPM5/JV	M5
DRF.STOP01/JV	G1/8"
DRF.STOP02/JV	G1/4"
DRF.STOP03/JV	G3/8"
DRF.STOP04/JV	G1/2"

### Stop BSPT draad, binnenzeskant



T

bestelcode	T
DRF.STOP01/ZK	R1/8"
DRF.STOP02/ZK	R1/4"
DRF.STOP03/ZK	R3/8"
DRF.STOP04/ZK	R1/2"

### Stop BSPP draad, binnenzeskant



T

bestelcode	T
DRF.STOPG01/ZK	G1/8"
DRF.STOPG02/ZK	G1/4"
DRF.STOPG03/ZK	G3/8"
DRF.STOPG04/ZK	G1/2"
DRF.STOPG05/ZK	G3/4"

### Moer metrische draad



T

bestelcode	T
DRF.MOERM10	M10X1
DRF.MOERM16	M16X1.5
DRF.MOERM20	M20X1.5
DRF.MOERM26	M26X1.5
DRF.MOERM28	M28X1.5

### Stop BSPT draad, buitenzeskant



T

bestelcode	T
DRF.STOPM5/MZ	M5
DRF.STOP01/MZ	R1/8"
DRF.STOP02/MZ	R1/4"
DRF.STOP03/MZ	R3/8"
DRF.STOP04/MZ	R1/2"
DRF.STOP05/MZ	R3/4"
DRF.STOP06/MZ	R1"

### Blindkap BSPP draad, buitenzeskant



T

bestelcode	T
DRF.KAP01	G1/8"
DRF.KAP02	G1/4"
DRF.KAP03	G3/8"
DRF.KAP04	G1/2"

### Moer BSPP draad



T

bestelcode	T
DRF.MOER01	G1/8"
DRF.MOER02	G1/4"
DRF.MOER03	G3/8"
DRF.MOER04	G1/2"

### Rechte slangverbinder



ØD<sup>2</sup>

ØD<sup>1</sup>

bestelcode	ØD <sup>1</sup>	ØD <sup>2</sup>
DRF.SP02	2	2
DRF.SP0302	3	2
DRF.SP03	3	3
DRF.SP0403	4	3
DRF.SP04	4	4
DRF.SP0604	6	4
DRF.SP06	6	6

### Haakse slangverbinder



ØD<sup>1</sup> (2X)

bestelcode	ØD <sup>1</sup>
DRF.SPM5-2/L	2
DRF.SPM5-3/L	3
DRF.SPM5-4/L	4
DRF.SPM5-6/L	6

### T- slangverbinder



ØD<sup>1</sup> (3X)

bestelcode	ØD <sup>1</sup>
DRF.SPM5-2/T	2
DRF.SPM5-3/T	3
DRF.SPM5-4/T	4
DRF.SPM5-6/T	6

## Draadfittingen messing vernikkeld

### Slangpilaar BSPP buitendraad



bestelcode	ØD'	T
DRF.SPM5-2	2	M5
DRF.SPM5-3	3	M5
DRF.SPM5-4	4	M5
DRF.SPM5-6	6	M5
DRF.SPM5-45	4.5	M5

bestelcode	ØD'	T
DRF.SP01-07	7	G1/8"
DRF.SP02-07	7	G1/4"
DRF.SP01-08	8	G1/8"
DRF.SP02-08	8	G1/4"

bestelcode	ØD'	T
DRF.SP01-09	9	G1/8"
DRF.SP02-09	9	G1/4"
DRF.SP03-09	9	G1/8"
DRF.SP02-12	12	G1/4"

bestelcode	ØD'	T
DRF.SP03-12	12	G3/8"
DRF.SP04-12	12	G1/2"
DRF.SP03-17	17	G3/8"
DRF.SP04-17	17	G1/2"

### Slangpilaar BSPT buitendraad



bestelcode	ØD'	T
DRF.SP01-06/C	6	R1/8"
DRF.SP02-06/C	6	R1/4"
DRF.SP01-07/C	7	R1/8"
DRF.SP02-07/C	7	R1/4"
DRF.SP01-08/C	8	R1/8"
DRF.SP02-08/C	8	R1/4"
DRF.SP01-09/C	9	R1/8"
DRF.SP02-09/C	9	R1/4"

bestelcode	ØD'	T
DRF.SP03-09/C	9	R3/8"
DRF.SP04-09/C	9	R1/2"
DRF.SP01-10/C	10	R1/8"
DRF.SP02-10/C	10	R1/4"
DRF.SP03-10/C	10	R3/8"
DRF.SP04-10/C	10	R1/2"
DRF.SP02-12/C	12	R1/4"
DRF.SP03-12/C	12	R3/8"

bestelcode	ØD'	T
DRF.SP04-12/C	12	R1/2"
DRF.SP03-14/C	14	R3/8"
DRF.SP04-14/C	14	R1/4"
DRF.SP03-16/C	16	R3/8"
DRF.SP04-16/C	16	R1/2"
DRF.SP05-16/C	16	R3/4"
DRF.SP03-17/C	17	R3/8"
DRF.SP04-17/C	17	R1/2"

bestelcode	ØD'	T
DRF.SP03-18/C	18	R3/8"
DRF.SP04-18/C	18	R1/2"
DRF.SP05-18/C	18	R3/4"
DRF.SP03-20/C	20	R3/8"
DRF.SP04-20/C	20	R1/2"
DRF.SP05-20/C	20	R3/4"
DRF.SP05-25/C	25	R3/4"
DRF.SP06-25/C	25	R1"

### Slangpilaar BSPP buitendraad met O-ring



bestelcode	ØD'	T
DRF.SPM5-45/OR	4.5	M5
DRF.SP01-07/OR	7	G1/8"
DRF.SP02-07/OR	7	G1/4"
DRF.SP01-08/OR	8	G1/8"
DRF.SP02-08/OR	8	G1/4"

bestelcode	ØD'	T
DRF.SP04-08/OR	8	G1/2"
DRF.SP01-09/OR	9	G1/8"
DRF.SP02-09/OR	9	G1/4"
DRF.SP01-09/OR	9	G1/8"
DRF.SP03-09/OR	9	G3/8"

bestelcode	ØD'	T
DRF.SP02-12/OR	12	G1/4"
DRF.SP03-12/OR	12	G3/8"
DRF.SP04-12/OR	12	G1/2"
DRF.SP04-13/OR	13	G1/2"

bestelcode	ØD'	T
DRF.SP03-17/OR	17	G3/8"
DRF.SP04-17/OR	17	G1/2"
DRF.SP05-19/OR	19	G3/4"
DRF.SP06-25/OR	25	G1"

### Slangpilaar BSPT buitendraad - staal



bestelcode	ØD'	T
DRF.SP01-04/ST	4	R1/8"
DRF.SP01-06/ST	6	R1/8"
DRF.SP02-06/ST	6	R1/4"
DRF.SP02-08/ST	8	R1/4"
DRF.SP02-09/ST	9	R1/4"
DRF.SP02-10/ST	10	R1/4"

bestelcode	ØD'	T
DRF.SP02-13/ST	13	R1/4"
DRF.SP03-08/ST	8	R3/8"
DRF.SP03-10/ST	10	R3/8"
DRF.SP03-13/ST	13	R3/8"
DRF.SP03-16/ST	16	R3/8"
DRF.SP04-08/ST	8	R1/2"

bestelcode	ØD'	T
DRF.SP04-09/ST	9	R1/2"
DRF.SP04-10/ST	10	R1/2"
DRF.SP04-13/ST	13	R1/2"
DRF.SP04-16/ST	16	R1/2"
DRF.SP04-19/ST	19	R1/2"
DRF.SP05-16/ST	16	R3/4"

bestelcode	ØD'	T
DRF.SP05-19/ST	19	R3/4"
DRF.SP05-25/ST	25	R3/4"
DRF.SP06-19/ST	19	R1"
DRF.SP06-25/ST	25	R1"

### Slangpilaar BSPP binnendraad



bestelcode	ØD'	T
DRF.SP51-06	6	G1/8"
DRF.SP51-07	7	G1/8"
DRF.SP52-07	7	G1/4"
DRF.SP52-08	8	G1/4"
DRF.SP52-09	9	G1/4"

bestelcode	ØD'	T
DRF.SP53-09	9	G3/8"
DRF.SP53-10	10	G3/8"
DRF.SP53-12	12	G3/8"
DRF.SP54-12	12	G1/2"

### Haakse slangpilaar BSPT buitendraad



bestelcode	ØD'	T
DRF.SP01-06/L	6	R1/8"
DRF.SP02-06/L	6	R1/4"
DRF.SP01-07/L	7	R1/8"
DRF.SP02-07/L	7	R1/4"
DRF.SP02-09/L	9	R1/4"

### Handmontage fitting BSPP buitendraad



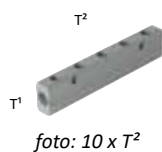
bestelcode	ØD'	T
HMK10-06-G02	Ø10-Ø6	G1/4"
HMK12-08-G02	Ø12-Ø8	G1/4"
HMK14-06-G02	Ø14-Ø6	G1/4"
HMK15-10-G02	Ø15-Ø6	G1/4"
HMK17-08-G02	Ø17-Ø8	G1/4"
HMK17-08-G03	Ø17-Ø8	G3/8"
HMK19-10-G02	Ø19-Ø10	G1/4"
HMK19-10-G03	Ø19-Ø10	G3/8"

### Handmontage fitting BSPP binnendraad



bestelcode	ØD'	T
HMK10-06-G52	Ø10-Ø6	G1/4"
HMK12-08-G52	Ø12-Ø8	G1/4"
HMK14-06-G52	Ø14-Ø6	G1/4"
HMK15-10-G52	Ø15-Ø6	G1/4"
HMK17-08-G52	Ø17-Ø8	G1/4"
HMK17-08-G53	Ø17-Ø8	G3/8"
HMK19-10-G52	Ø19-Ø10	G1/4"
HMK19-10-G53	Ø19-Ø10	G3/8"

## Verdeelblokken tweezijdig BSPP uitlaat



bestelcode	T <sup>1</sup>	T <sup>2</sup>
DRF.2F02.2F01/K	2x G1/4"	4x G1/8"
DRF.2F02.3F01/K	2x G1/4"	6x G1/8"
DRF.2F02.4F01/K	2x G1/4"	8x G1/8"
DRF.2F02.5F01/K	2x G1/4"	10x G1/8"
DRF.2F02.6F01/K	2x G1/4"	12x G1/8"
DRF.2F03.2F02/K	2x G3/8"	4x G1/4"
DRF.2F03.3F02/K	2x G3/8"	6x G1/4"
DRF.2F03.4F02/K	2x G3/8"	8x G1/4"
DRF.2F03.5F02/K	2x G3/8"	10x G1/4"
DRF.2F03.6F02/K	2x G3/8"	12x G1/4"
DRF.2F04.2F03/K	2x G1/2"	4x G3/8"
DRF.2F04.3F03/K	2x G1/2"	6x G3/8"
DRF.2F04.4F03/K	2x G1/2"	8x G3/8"
DRF.2F04.5F03/K	2x G1/2"	10x G3/8"
DRF.2F04.6F03/K	2x G1/2"	12x G3/8"

## Verdeelblokken eenzijdig BSPP uitlaat



bestelcode	T <sup>1</sup>	T <sup>2</sup>
DRF.2F02.2F01	2x G1/4"	2x G1/8"
DRF.2F02.3F01	2x G1/4"	3x G1/8"
DRF.2F02.4F01	2x G1/4"	4x G1/8"
DRF.2F02.5F01	2x G1/4"	5x G1/8"
DRF.2F02.6F01	2x G1/4"	6x G1/8"
DRF.2F03.2F02	2x G3/8"	2x G1/4"
DRF.2F03.3F02	2x G3/8"	3x G1/4"
DRF.2F03.4F02	2x G3/8"	4x G1/4"
DRF.2F03.5F02	2x G3/8"	5x G1/4"
DRF.2F03.6F02	2x G3/8"	6x G1/4"
DRF.2F04.2F03	2x G1/2"	2x G3/8"
DRF.2F04.3F03	2x G1/2"	3x G3/8"
DRF.2F04.4F03	2x G1/2"	4x G3/8"
DRF.2F04.5F03	2x G1/2"	5x G3/8"
DRF.2F04.6F03	2x G1/2"	6x G3/8"

## Haaks verdeelblok BSPP



bestelcode	T <sup>1</sup>
DRF.4F01/BLOK	G1/8"
DRF.4F02/BLOK	G1/4"
DRF.4F03/BLOK	G3/8"
DRF.4F04/BLOK	G1/2"

## Terugslagkleppen met draadaansluiting

### AZ-VNRM/FF binnendraad x binnendraad

### AZ-VNRM/MF buitendraad x binnendraad

Messing vernikkelde terugslagkleppen geschikt voor maximaal 10 bar. Minimale werkdruk 2 bar. Openingsdruk 0.2 bar. Veer SS302, NBR afdichtingen voor temperaturen van -20°C tot +80°C



De pijl op het product geeft de stromingsrichting aan.

bestelcode	T <sup>1</sup>
AZ-VNRM5FF	M5
AZ-VNR1/8FF	G1/8"
AZ-VNR1/4FF	G1/4"
AZ-VNR3/8FF	G3/8"
AZ-VNR1/2FF	G1/2"



bestelcode	T <sup>1</sup>
AZ-VNRM5MF	M5
AZ-VNR1/8MF	G1/8"
AZ-VNR1/4MF	G1/4"
AZ-VNR3/8MF	G3/8"
AZ-VNR1/2MF	G1/2"

## BAL-VNR/IC/JV binnendraad x binnendraad

RVS316 hogedruk terugslagkleppen voor alle vloeistoffen tot 350 bar. Openingsdruk 0.5 bar, op verzoek leverbaar tot 8 bar openingsdruk. FKM (Viton®) afdichtingen voor temperaturen van -20° tot +140°C. Andere afdichtingsmaterialen op aanvraag leverbaar.



De pijl op het product geeft de stromingsrichting aan.

bestelcode	T <sup>1</sup>	code	T <sup>1</sup>
BAL-VNR00/IC/JV	G1/8"	BAL-VNR05/IC/JV	G1"
BAL-VNR01/IC/JV	G1/4"	BAL-VNR06/IC/JV	G1.1/4"
BAL-VNR02/IC/JV	G3/8"	BAL-VNR07/IC/JV	G1.1/2"
BAL-VNR03/IC/JV	G1/2"	BAL-VNR08/IC/JV	G2"
BAL-VNR04/IC/JV	G3/4"		



## MO-SMALL / MO-IRDJA vloeistoffen en lucht

RVS304 terugslagkleppen (op verzoek RVS316 leverbaar) voor alle media tot 16 bar. Zeer lage openingsdruk 0.025 / 0.035 bar. FKM (Viton®) afdichtingen voor temperaturen van -20°C tot +150°C. Andere afdichtingsmaterialen op aanvraag leverbaar. Let op dat er bij gebruik voor lucht wordt gekozen voor de juiste variant; deze heeft een verstevigde constructie die bestand is tegen de wervelingen die lucht in de terugslagklep kunnen veroorzaken.



De pijl op het product geeft de stromingsrichting aan.

vloeistoffen	lucht	model	T <sup>1</sup>
MO-SMALL02	MO-SMALL02A	1	G1/4"
MO-SMALL03	MO-SMALL03A	1	G3/8"
MO-SMALL04	MO-SMALL04A	2	G1/2"
MO-IRDJA05	MO-IRDJA05A	3	G3/4"
MO-IRDJA06	MO-IRDJA06A	3	G1"
MO-IRDJA07	MO-IRDJA07A	3	G1.1/4"
MO-IRDJA08	MO-IRDJA08A	3	G1.1/2"
MO-IRDJA09		3	G2"
MO-IRDJA10		3	G2.1/2"
MO-IRDJA11		3	G3"
MO-IRDJA12		3	G4"



## DRF.VNR/FF terugslagklep bi x bi

## DRF.VNR/F filter

Messing terugslagkleppen met opschroefbare zeef (voetklep) voor drukken tot 16 bar. Openingsdruk 0.3 bar. NBR afdichtingen voor temperaturen van -20°C tot +110°C. Geschikt voor perslucht, water en oliën.



bestelcode	T <sup>1</sup>
DRF.VNR04FF	G1/2"
DRF.VNR05FF	G3/4"
DRF.VNR06FF	G1"
DRF.VNR07FF	G1.1/4"
DRF.VNR08FF	G1.1/2"
DRF.VNR09FF	G2"



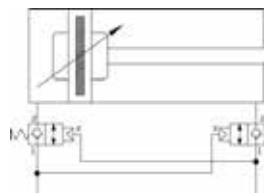
bestelcode	filter voor
DRF.VNR04F	G1/2"
DRF.VNR05F	G3/4"
DRF.VNR06F	G1"
DRF.VNR07F	G1.1/4"
DRF.VNR08F	G1.1/2"
DRF.VNR09F	G2"

## ZA7188. Pneumatisch gestuurde 2/2 terugslagklep

Dit element is bedoeld als valbeveiliging voor pneumatiek cilinders. Met deze componenten kan bij leidingbreuk de cilinder niet onverwacht en snel meer in beweging komen. Bij normaal gebruik wordt het gedrag van de cilinder niet beïnvloed.



bestelcode	T <sup>1</sup>
ZA718800	1/8"
ZA718801	1/4"
ZA718802	3/8"
ZA718803	1/2"



aansluitschema

## Terugslagkleppen met draadaansluiting

De terugslagkleppen van Itap zijn robuust en geschikt voor een grote flow. Het verschil tussen de modellen Europa en York zit in de klep. De York-serie is uitgevoerd met een kunststof klep, bij de Europa-serie is deze klep van RVS304.



### IT-EUROPA



bestelcode	T <sup>1</sup>	bestelcode	T <sup>1</sup>
IT-EUROPA10003	G3/8"	IT-EUROPA10008	G1.1/2"
IT-EUROPA10004	G1/2"	IT-EUROPA10009	G2"
IT-EUROPA10005	G3/4"	IT-EUROPA10010	G2.1/2"
IT-EUROPA10006	G1"	IT-EUROPA10011	3"
IT-EUROPA10007	G1.1/4"	IT-EUROPA10012	4"

### IT-YORK



bestelcode	T <sup>1</sup>	bestelcode	T <sup>1</sup>
IT-YORK10303	G3/8"	IT-YORK10308	G1.1/2"
IT-YORK10304	G1/2"	IT-YORK10309	G2"
IT-YORK10305	G3/4"	IT-YORK10310	G2.1/2"
IT-YORK10306	G1"	IT-YORK10311	3"
IT-YORK10307	G1.1/4"	IT-YORK10312	4"